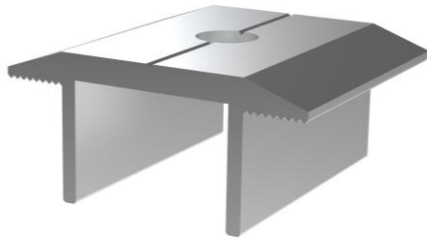


PGS-A

PRODUCT DESCRIPTION



- Simple clamp

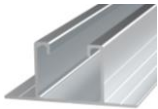
CHARACTERISTICS

- Simple clamp for solar panel fixing.
- In EN AW 6005-T6 anodised extruded aluminium.
- For outside use.
- Support areas with toothed surface for better grip.
- Prepared for attachment using M8 screws.
- Can be used to mount panels in both intermediate areas and at the ends of lines.
- Specifically designed for vertical walls with the attachment of frame gauges when mounting at the ends of lines.
- Creates a 26-mm separation between panels.

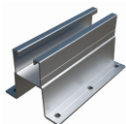
APPLICATIONS/MOUNTING ACCESSORIES



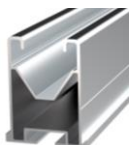
GP-XS



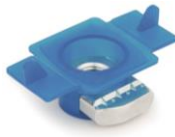
PSA-A



PSA-AV



PSE-A



TURXA208

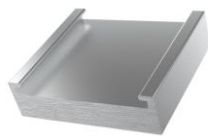


6921I08070

Used for the fixing of solar panels. Attaches solar panels through the pressure exerted on the frames. Mounting accessories: one **6921I08070** DIN-6921 M8x70 bolt and one **TURXA208** "INDETRUT quick nut".

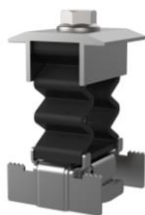
The **TURXA208** quick nut can be mounted on the **GP-XS** "INDETRUT solar perforated guide" as well as any of the solar range aluminium profiles: **PSA-A** "Winged aluminium profile", **PSA-AV** "Winged aluminium profile for direct fixing on valley" or **PSE-A** "Aluminium profile for assembled fixing".

Pressure is exerted through the pre-tightening of the bolt on the **TURXA208** nut with a maximum tightening torque of 14 Nm.



GM-A

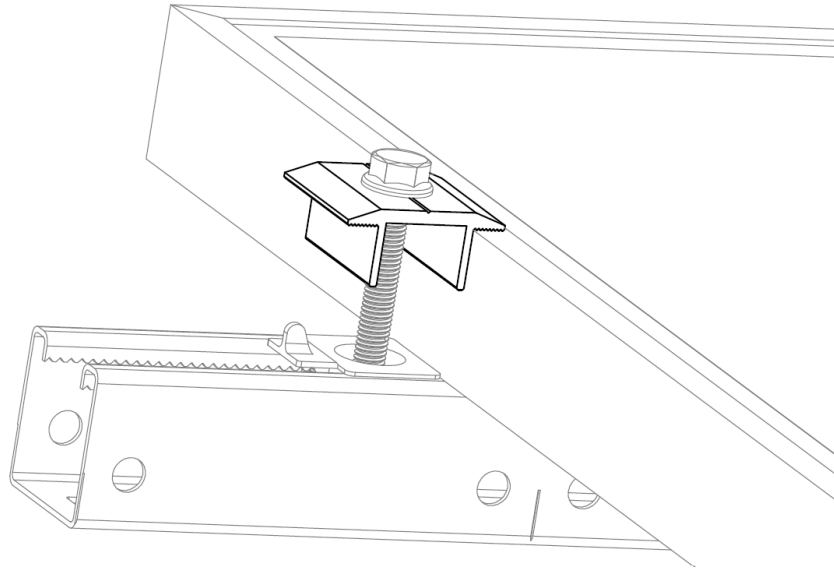
When panels are mounted at the ends of lines it is also necessary to use a **GM-A** "aluminium gauge for solar frame". The gauge size should be the same height as the solar panel frame.



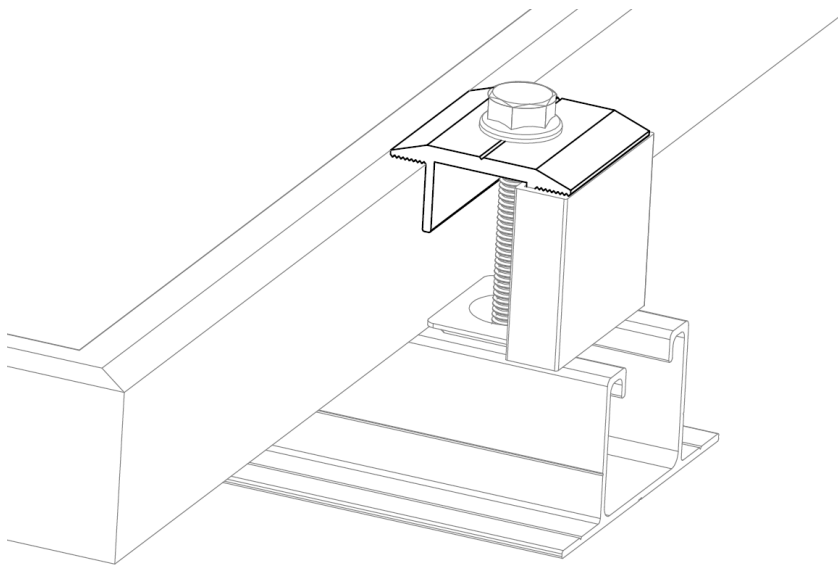
KFRSC3050

This is part of the **KFRSC3050** "Quick pre-assembled clamp".

APPLICATION EXAMPLES





Application example 1: Mounting on an INDEXTRUT solar perforated guide.



Application example 2: Mounting on a winged solar profile for direct fixing.



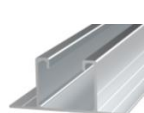
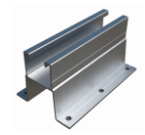
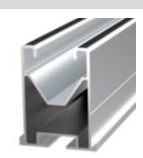




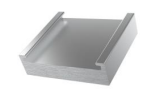
1. RANGE

ITEM	CODE	PHOTO	DESCRIPTION	SEPARATION	MATERIAL	FINISH
1	PGSA26		Simple clamp	26 mm	 6005-T6 aluminium	 Anodised

2. INSTALLATION INFORMATION

2.1 PGS-A

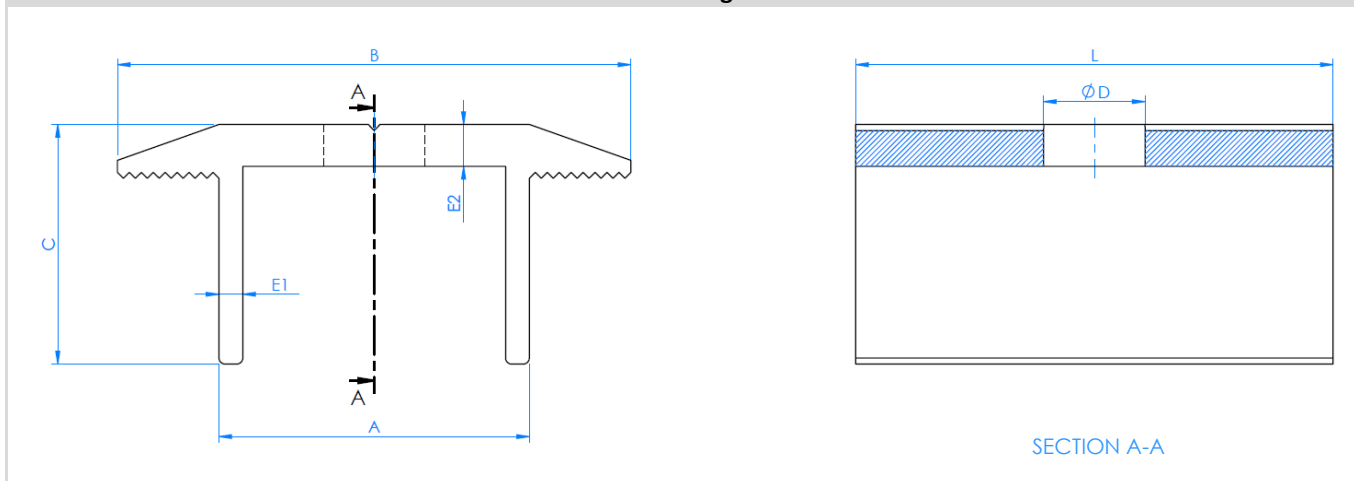
Aluminium simple clamp

	Material	Compatible			
	 6005-T6 aluminium	 PSA-A Winged aluminium profile	 PSA-AV Winged aluminium profile for direct fixing on valley	 PSE-A Aluminium profile for assembled fixing	 GP-XS INDEXTRUT solar perforated guide
Finish	Accessories				
 Anodised	 TURXA208 INDEXTRUT quick nut	 6921108070 A2-70 DIN-6921 stainless steel bolt	 GM-A Gauge for solar frame		

Measurement table

Code	A (mm)	B (mm)	C (mm)	D (mm)	E1 (mm)	E2 (mm)	L (mm)
PGSA26	26	43	20	8.5	2	3.5	40


Drawing



Mechanical properties of the material

	Yield strength $F_{y0.2}$ (N/mm ²)	Ultimate load F_u (N/mm ²)	Elastic modulus E (N/mm ²)	Transverse elastic modulus G (N/mm ²)	Linear expansion coefficient α_L ($\mu\text{m}/\text{C}^\circ$)	Specific weight ρ (kg/m ³)
EN AW6005-T6 aluminium	225	270	69,500	26,200	23.3	2,710

Mechanical properties of the profile.

	Area S (cm ²)	Moment of inertia I_x (cm ⁴)	Moment of inertia I_y (cm ⁴)	Section modulus W_x (cm ³)	Section modulus W_y (cm ³)	Linear weight W (kg/m)
 PGS- A	2.03	0.58	2.76	0.39	1.28	0.55

Installation table

	Mounting bolt	Mounting wrench (mm)	Max. installation tightening torque (N/m)	Recommended load Nrd (KN)
PGSA26	DIN-6921 M8 L70	SW13	14	4