



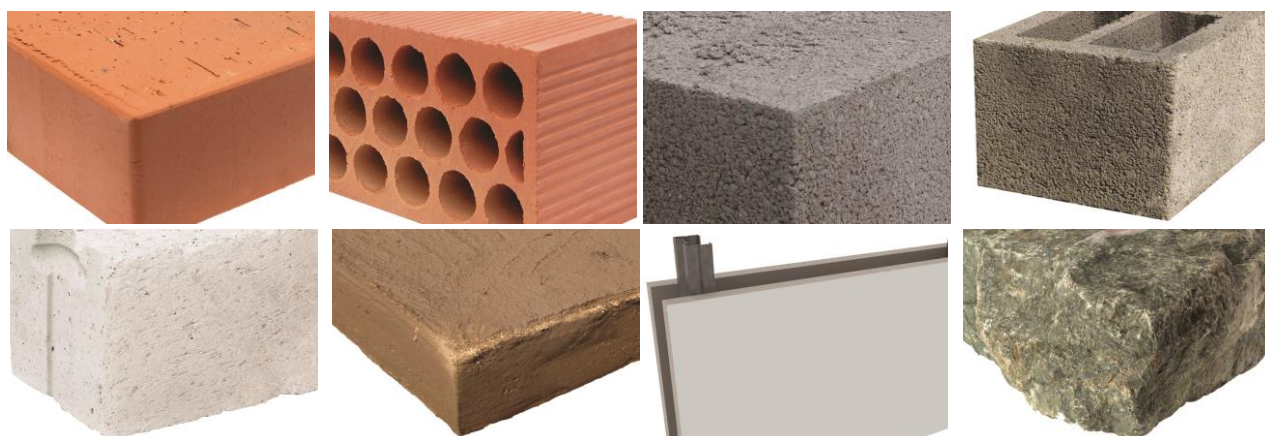
CHARACTERISTICS

Polypropylene plug for using in hollow and solid materials.



Quick solution for cases with low load requirements.

Examples: fixing in hollow and solid materials.

BASE MATERIAL



1. RANGE

ITEM	CODE	DIMENSIONS	PHOTO	MATERIAL
1	TACOP	From 5 X 21 to 14 X 55		

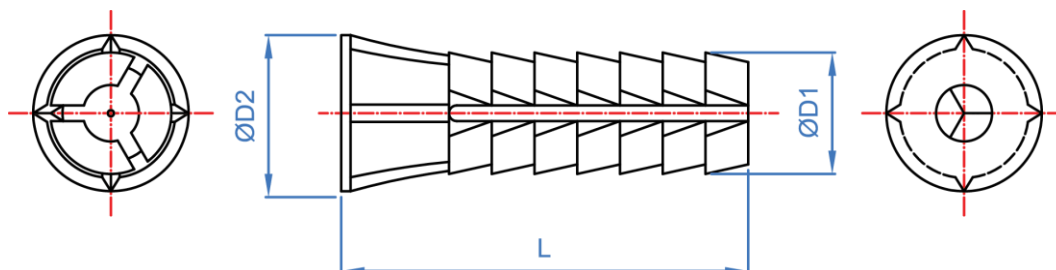
1. INSTALLATION DATA

2.1 TA-PL Polypropylene plug



Installation Data

CODE		TACOP05	TACOP06	TACOP07	TACOP08	TACOP09	TACOP10	TACOP11	TACOP12	TACOP14
ØD1: Plug Diameter	[mm]	5	6	7	8	9	10	10	12	14
ØD2: Neck diameter	[mm]	9,6	10,7	10,7	12,8	13,8	14,5	14,5	16,5	18
L: Length	[mm]	20	22	23	25	30	40	45	50	50
Minimum thickness of base material	[mm]	25	25	30	30	35	45	50	60	60
Minimum depth of the drill hole	[mm]	20	22	23	25	30	40	45	50	50



MAXIMUM RECOMMENDED LOAD

CODE	CONCRETE [kg]
TACOP05	5
TACOP06	5
TACOP07	6
TACOP08	9
TACOP09	9
TACOP10	13
TACOP11	15
TACOP12	17
TACOP14	28