



PST + ARVUL A2



PSTL + ARVUL A2

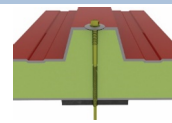
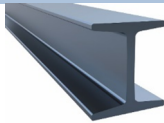
CHARACTERISTICS

- Drill bit tip, drills directly into the material without the need for pre-drilling.
- Normal drill bit (PST, no. 3) for installation on purlins and long drill bit (PSTL, no. 5) for installation on beams.
- Self-tapping thread with two bodies of equal pitch (PS) and self-tapping thread with two bodies of different pitch (PSL)
- Washer with A2 stainless steel plate and EPDM rubber.
- Atlantis C4-M coating.
- Resistance rating 1000 hours in CNS.
- Available in different lengths.

APPLICATIONS

- Suitable for fastening elements to structural beams (IPN, HEB, etc.)
- Screw for joining sandwich panel type enclosures and roofs.
- For watertight joints on façades and roofs.

BASE MATERIAL



APPLICATION EXAMPLES



1. RANGE

ITEM	CODE	PHOTO	DIAMETER [mm]	LENGTH [mm]	THICKNESS TO FIX [mm]	RECESS	COATING
1	PST + ARVUL A2		5	60-115	-----		
2	PSTL + ARVUL A2		5	75-130	-----		

2. INSTALLATION DATA

2.1 PST + ARVUL A2

Self-drilling sandwich panel screw with organic coating and EPDM washer in A2 stainless steel



Properties

Steel	Organic coating	Hexagonal with stamped washer + ARVUL A2		

Features

- Drill bit tip: allows direct drilling in metal materials up to 6 mm thick (purlins). No pre-drilling required.
- 16 mm diameter EPDM washer to ensure watertightness in panels installed in enclosures and exterior cladding.
- Self-tapping thread and C4-M organic coating.
- Resistance rating 1000 hours in CNS.
- Hexagonal head with stamped washer
- Drill speed for installation: 1000 - 1800 rpm.
- Application: fixing of sandwich panels on purlins.

Advantages



Drill bit tip

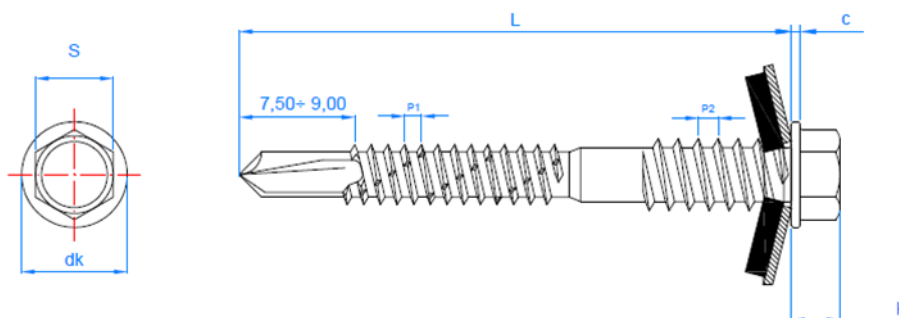


Installation with screwdriver

Installation Data

CODE		PST1655060	PST1655082	PST1655098	PST1655115
L: length	[mm]	60	82	98	115
dk: head diameter	[mm]	10.50	10.50	10.50	10.50
C: head washer thickness	[mm]	1	1	1	1
P1: thread pitch ST 5.5	[mm]	1.8	1.8	1.8	1.8
P2: thread pitch ST 6.3	[mm]	1.8	1.8	1.8	1.8
S: Fixed spanner	[mm]	8	8	8	8
Drilling capacity	[mm]	1.5-6.0	1.5-6.0	1.5-6.0	1.5-6.0
Thickness of sandwich panel to be fixed	[mm]	31-45	43-67	54-83	56-100
Installation tip code		BOCA008	BOCA008	BOCA008	BOCA008

DIAGRAM



2.2 PSTL + ARVUL A2

Self-drilling sandwich panel screw with organic coating and EPDM washer in A2 stainless steel



Properties

Steel	Organic coating	Hexagonal with stamped washer + ARVUL A2	

Features

- Drill bit tip: allows direct drilling in metal materials, from 6 mm (purlins) to 12 mm (beams). No pre-drilling required.
- Self-tapping thread and C4-M organic coating.
- Resistance rating 1000 hours in CNS.
- Hexagonal head with stamped washer
- Drill speed for installation: 1000 - 1800 rpm.
- Application: fixing of sandwich panels on beams.

Advantages



Long drill bit tip

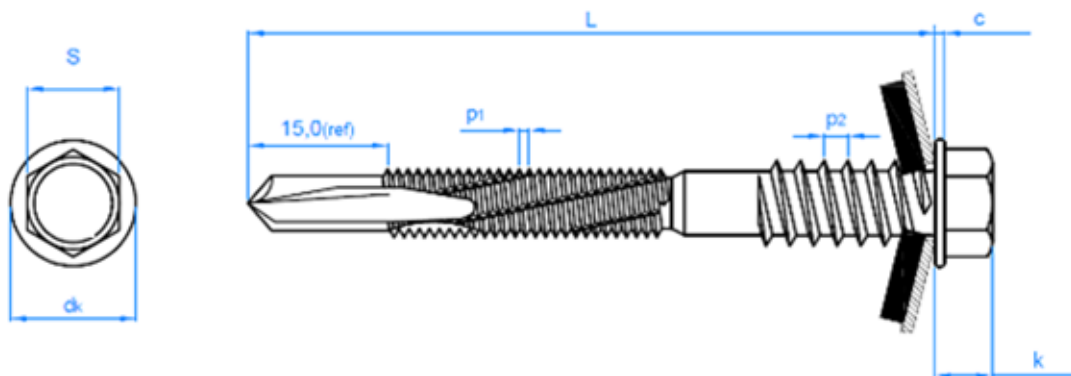


Installation with screwdriver

Installation Data

CODE		PSTL1655075	PSTL1655085	PSTL1655105	PSTL1655130
L: length	[mm]	75	85	105	130
dk: head diameter	[mm]	10.50	10.50	10.50	10.50
C: head washer thickness	[mm]	1	1	1	1
P1: thread pitch ST 5.5	[mm]	1.05	1.05	1.05	1.05
P2: thread pitch ST 6.3	[mm]	1.8	1.8	1.8	1.8
S: Fixed spanner	[mm]	8	8	8	8
Drilling capacity	[mm]	6.0 - 12.0	6.0 - 12.0	6.0 - 12.0	6.0 - 12.0
Thickness of sandwich panel to be fixed	[mm]	33-60	38-70	48-90	63-115
Installation tip code		BOCA008	BOCA008	BOCA008	BOCA008

DIAGRAM



3. EXTRACTION LOAD VALUES

RESISTANCE [kN]		
PRODUCT	MAXIMUM RECOMMENDED LOAD	
	Drilled thickness [mm]	N _{rec} [kN]
PS 3	2.0	1.77
	3.5	2.86
	5.0	3.43
PS 5	6.0	1.87
	8.0	4.72