

GP-XSB

PRODUCT DESCRIPTION

- INDEXTRUT solar perforated guide with butylene adhesive sealing tape.

CHARACTERISTICS

- Perforated guide for installation of solar panels on roofs.
- Manufactured from **Atlantis® C4-M**-coated S280 steel.
- For outside use.
- Designed for coplanar assembly systems.
- Direct fixing to roof with **TAC-N**, **TAC-B** or **AUENI** stitching screw options available.
- Grooves with internal tothing to facilitate pre-assembly and the adjustment of the elements to be attached.
- Standard INDEXTRUT 41 x 41 guide measurements.
- 1.5 mm-thick galvanised steel
- Central groove compatible with INDEXTRUT accessories.
- Includes butylene tape at the bottom to reduce operator assembly time.



APPLICATIONS/MOUNTING ACCESSORIES



KFRSC3050 / KFRSCN3050

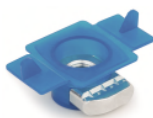
These are used in **triangular and coplanar steel assembly systems** as structural elements onto which solar panels can be mounted and supported as continuous profiles as well as interrupted profiles on coplanar systems.

In order to attach solar panels to the guide, one of the following assembly accessories should be used:

1. **KFRSC3050 / KFRSCN3050** "quick pre-assembled clamp for solar panels - complete kit".
2. Reference numbers:
 - One **PGSA26 / PGSN26** "single aluminium clamp for solar panels".
 - One **TURXA208** "INDEXTRUT quick nut, A2 stainless steel".
 - One **6921108070** DIN-6921 M8x70 all-thread bolt.



PGSA26 / PGSN26



TURXA208



6921108070

FIXING SYSTEM/ASSEMBLY ACCESSORIES

Mounting with direct fixing/Application example 1

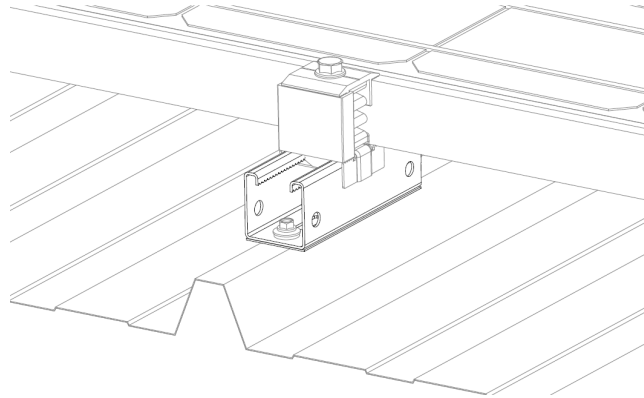
FIXING SYSTEM	<p>TAC-N/TAC-B Atlantis/Bimetal thin sheet screw</p>	<p>AUENI Atlantis C4-M self-tapping screw</p>
----------------------	---	--

BASE MATERIAL/FIXING

See technical data sheets:

- SC-GPD Coplanar installation system with perforated steel channel Atlantis C4-M, INDEXTRUT solar (GP-XS). Discontinuous channel format.

APPLICATION EXAMPLES



Application example: mounting with direct fixing using thin sheet screws.

1. RANGE

ITEM	CODE	PHOTO	DESCRIPTION	LENGTH	MATERIAL		FINISH
1	GPXSB415012		INDETRUT solar perforated guide with butylene adhesive sealing tape.	125 mm	S280 steel	butylene	Atlantis C4-M

2. INSTALLATION INFORMATION

2.1 GP-XSB

INDEXTRUT solar perforated guide with butylene adhesive sealing tape.



Material/finish	Assembly accessories		
<p>S280 steel</p>	<p>KFRSC3050 / KFRSC3050 Quick pre-assembled clamp</p>		
<p>Butylene</p>	<p>PGSA26 / PGSN26 Simple clamp</p>	<p>TURXA208 INDEXTRUT quick nut</p>	<p>6921108070 A2-70 DIN-6921</p>
<p>Atlantis C4-M</p>	<p>Fixing systems</p>		
	<p>TAC-N/TAC-B Atlantis/Bimetal thin sheet screw</p>	<p>AUENI Atlantis C4-M self-tapping screw</p>	

BASE MATERIAL/FIXING

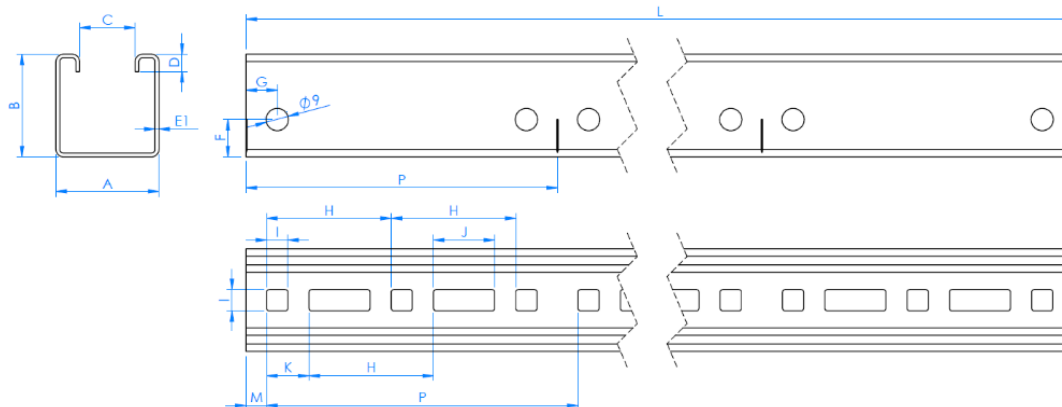
See technical data sheets:

- SC-GPD: Coplanar installation system with perforated steel channel Atlantis C4-M, INDEXTRUT solar. Discontinuous channel format

Measurement table

Code	A (mm)	B (mm)	C (mm)	D (mm)	E1 (mm)	F (mm)	G (mm)	H (mm)	I (mm)	J (mm)	K (mm)	L (mm)	M (mm)	P (mm)
GPXSB415012	41	41	22	7	1.5	15	12.5	50	8.5	24.5	17	125	8.3	125

Drawing



Mechanical properties of the material

	Yield strength $F_{y0.2}$ (N/mm ²)	Ultimate load F_u (N/mm ²)	Elastic modulus E (N/mm ²)	Transverse elastic modulus G (N/mm ²)	Linear expansion coefficient α_L ($\mu\text{m}/\text{C}^\circ$)	Specific weight ρ (kg/m ³)
S280 steel	280	360	210,000	81,000	12	7,850

Mechanical properties of the guide rail.

	Area S (cm ²)	Moment of inertia I_x (cm ⁴)	Moment of inertia I_y (cm ⁴)	Section modulus W_x (cm ³)	Section modulus W_y (cm ³)	Linear weight W (kg/m)
<p>GP-XS</p>	2.13	4.98	6.13	2.18	2.99	1.67