



**GM-AP**



**GM-AV**








**AL-HR**

**CHARACTERÍSTICS**

- Flat U-Type nails for use on non-moving lines
- “L” shape U-Type nails for use on mobile or vegetation lines
- Re-opened steel eye bolt for fixing wires and meshes to wooden posts.
- Highly resistant to weather and adverse climatic conditions.
- Easy to install.

**1.RANGE**

ITEM	CODE	PHOTO	DESCRIPTION	MATERIAL	COATING
1	<b>GM-AP</b>		U-Type Nail, flat shape		
2	<b>GM-AV</b>		U-Type Nail, “L” shape	 Steel	 Atlantis C3-H
3	<b>AL-HR</b>		Re-opened eye bolt		

## 2. INSTALLATION DATA

### 2.1 GM-AP

#### U-Type Nail, flat shape



#### Material



Steel

#### Coating

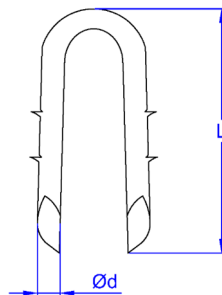


Atlantis C3-H

#### Installation data

CODE	ød [mm]	L [mm]
GMAP35	3,4 (18)	35
GMAP50	3,85 (19)	50

#### DRAWING



### 2.2 GM-AV

#### U-Type Nail, "L" shape



#### Material



Steel

#### Coating

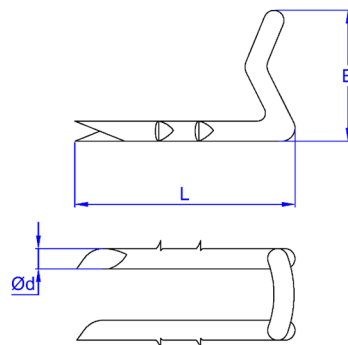


Atlantis C3-H

#### Installation data

CODE	ød [mm]	L [mm]	B [mm]
GMAV35	3,4 (18)	35	23

#### DRAWING



**2.3 AL-HR** Re-opened eye bolt



Material



Steel

Coating



Atlantis C3-H

Installation data

CODE	SIZE [mm] ( $\varnothing d \times L1 \times b$ )	$\varnothing d$ [mm]	L1 [mm]	b [mm]	L2 [mm]	$\varnothing D$ [mm]
ALHR21090	5,6 x 60 x 25	5,6	60	25	38	4,4

DRAWING

