



GO-AN



MC-OV



MC-MA



MC-PR

CHARACTERISTICS

- High-quality and resistant materials (extra)
- Flexible and lightweight elements.
- They offer a secure grip and are easy to install.
- High resistance to weather and adverse climatic conditions.
- Adaptable to any type of training and growth stages of the plant.
- Variety of dimensions and formats.

APPLICATION EXEMPLES

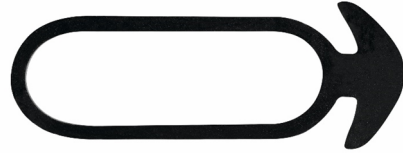


1.RANGE

ITEM	CODE	PHOTO	DESCRIPTION	MATERIAL
1	GO-AN		Rubber anchor	
2	MC-OV		PVC pipe Format: 1 kg Bundle	
3	MC-MA		PVC pipe Format: 2 kg Skein	
4	MC-PR		PVC pipe Format: Pre-cut	

2. INSTALLATION DATA

2.1 GO-AN Rubber anchor



Material

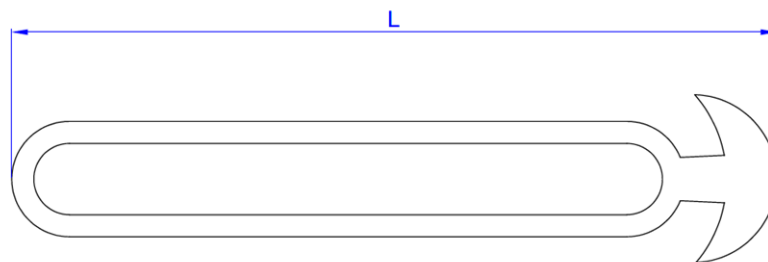


Rubber 100% synthetic

Installation data

CODE	Model	L [mm]
GOAN03B	Nº 3	30
GOAN05B	Nº 5	50
GOAN05M		
GOAN08B	Nº 8	80
GOAN08M		
GOAN10B	Nº 10	100
GOAN12B	Nº 12	120
GOAN15B	Nº 15	150
GOAN18B	Nº 18	180
GOAN20B	Nº 20	200

DRAWING



2.2

MC

PVC pipe for manual tying



Material



PVC Green*

Installation data

CODE	FORMAT	Diameter [mm]	Aprox. length [m]	Weight
MCOV030	BUNDLE	2,5	165	1 kg
MCOV030		3	120	
MCOV040		4	90	
MCMA025	SKEIN	2,5	330	2 kg
MCMA030		3	240	
MCMA040		4	180	
MCPR05250	PRE-CUT	5	25 cm	-
MCPR05400			40 cm	
MCPR05600			60 cm	

* EXTRA quality PVC